

411-1215  
(Shown with  
optional rotating  
bumper)



411-1217

Piper Starter Stations straddle, roll adjacent to, or cantilever over patient meal assembly tray lines or work areas. They are designed to provide a convenient, organized method of storing and/or dispensing those basic items necessary for the commencement of patient meal assembly.

**STANDARD FEATURES**

- ◆ All stainless steel construction
- ◆ Ship knocked down to save freight costs
- ◆ Adjustable spacing on shelving and storage areas
- ◆ Ship complete with pans and bracing

**WARRANTY**

- ◆ One year parts and labor. Warranty is detailed on inside front cover of the price list.

**OPTIONS**

Part #	Description
<input type="checkbox"/> R	Rotating bumper (On model 411-1215)
<input type="checkbox"/> Y4	Polyurethane 4" casters (set of 4)
<input type="checkbox"/> Y5	Polyurethane 5" casters (set of 4)
<input type="checkbox"/> WB	Wheel Brakes (set of 2)

JOB \_\_\_\_\_ ITEM # \_\_\_\_\_ QTY # \_\_\_\_\_

**MODEL NUMBER**

- 411-1215                       411-1217
- 411-1219                       411-1218

**STRUCTURAL DESIGN**

All units are made of stainless steel and feature tubular stainless steel frames.

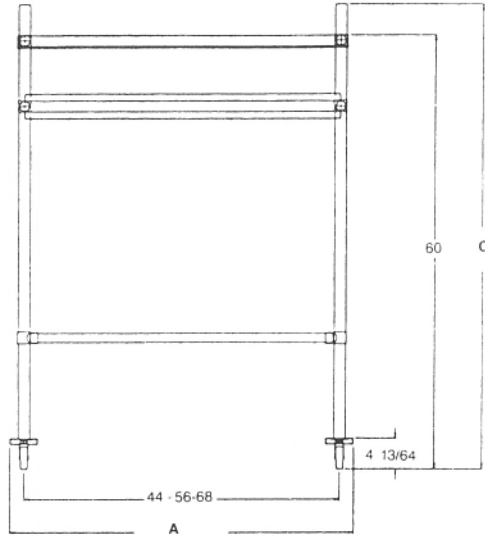
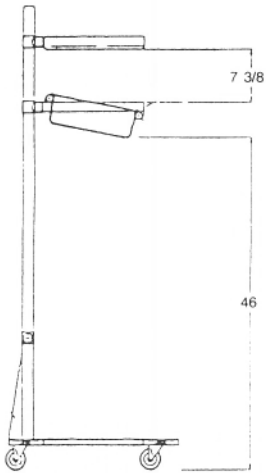
**MODEL 411-1215**

The frame and pan racks of this unit are constructed of 1" O.D. or 18-gauge stainless steel tubing. The top shelf is made of 18-gauge stainless steel with all edges turned down. This unit is shipped complete with one each full size, 2/3, and 1/2 size pan and three each 1/3 pans all 20-gauge stainless steel. This mobile starter station has four 5" swivel casters

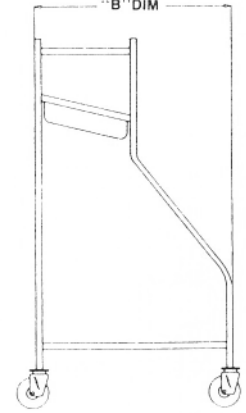
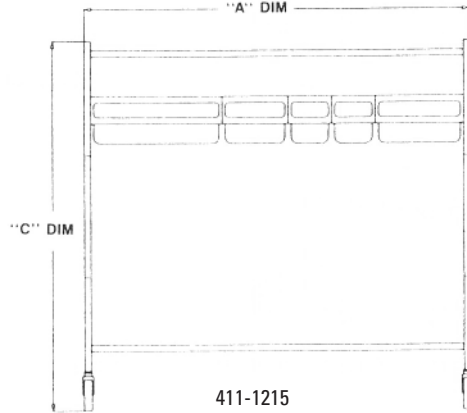
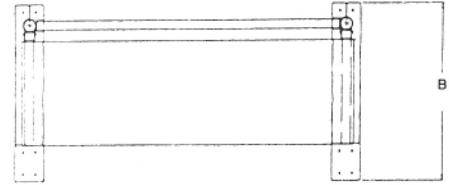
**MODEL 411-1217, 1218 AND 1219**

These stations have 1-5/8" O.D. tubular uprights cross braced with 1-1/4" diameter tube gusseted for strength and stability. The condiment/silverware pan/storage area is angled toward the user for easy access. The 48" wide unit comes with an 18-gauge stainless steel 14" deep shelf and a 2/3, 1/3 and two each 1/2 size pans. The 60" unit comes with the 14" deep shelf plus one full and three each 1/2 size pans; and the 72" wide unit comes with the 14" deep shelf plus one full and four each 1/2 size stainless steel pans.

**\*Bumpers are not available.**



- 411-1217 - 48" Cantilever Starter Station
- 411-1218 - 60" Cantilever Starter Station
- 411-1219 - 72" Cantilever Starter Station



Model#	A Length	B Width	C Height	Shelf Size
411-1215	71-3/4"	29-3/4"	61-3/8"	13-1/2" x 71-5/8"
411-1217	48"	24"	64-1/4"	14" x 46"
411-1218	60"	24"	64-1/4"	14" x 58"
411-1219	72"	24"	64-1/4"	14" x 70"

**F-7 SPEC**

**PIPER PRODUCTS**  
**BUILT TO LAST**  
[www.piperonline.net](http://www.piperonline.net)

300 S. 84th Avenue  
 Wausau, WI 54401  
 Phone: 800-544-3057  
 Fax: 715-842-3125

**LIMITED WARRANTY:** PIPER PRODUCTS warrants to the original purchaser parts and labor for a period of twelve (12) months from the date of purchase. See manufacturer's complete warranty for details.

It is our policy to build equipment which is design certified by companies that have been accredited at the Federal Level by the Occupational Safety and Health Agency (OSHA) and ANSI as a National Recognized Testing Laboratory. These companies include CSA International, Underwriters Laboratories, and the National Sanitation Foundation. However, a continuing program of product improvement makes it necessary to submit new models to the agencies as they are developed. Consequently, all models may not bear the appropriate labels at all times.

We reserve the right to change specifications and product design without notice. Such revisions do not entitle buyer to corresponding changes, improvements, additions or replacements for previously purchased equipment. Information is not for design purposes.